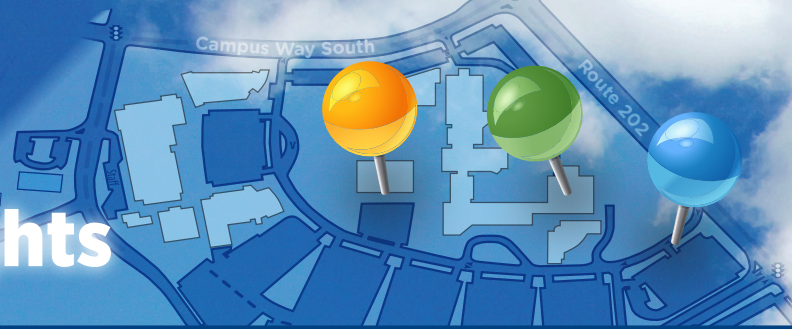




Transforming lives.

PRINCE GEORGE'S
COMMUNITY COLLEGE

Forrester
CONSTRUCTION
& Turner



Present... Construction Highlights

July 2016 | #pgcchere

Facilities Management Department Construction Update

On our way UP!

It's Happening...
HERE!

► Welcome to Your Future!

A Message from the Dean of Facilities Management Dr. David C. Mosby, P.E.



The Facilities Management Department envisions success by planning, constructing, renovating and maintaining the College's physical assets and resources to provide a welcoming and sustainable environment that supports the evolving needs of our students, faculty and staff.

As we begin to launch the construction phase for the Queen Anne Academic Center, Lanham Hall Renovation and Addition and Construct Culinary Arts Center capital projects, the Facilities Management design and construction team remains committed to the following three (3) goals:

1. To renovate / construct these projects as designed, on time and within budget, and deliver the facilities ready for occupancy.
2. To ensure the renovated and newly constructed space being created meets the programmatic needs of the building users and contributes to the overall campus environment.
3. To provide a welcoming, safe, and attractive campus that is in compliance with all applicable laws, regulations, and policies.

Sharing Progress with the Campus Community

Released quarterly until all projects are complete, the purpose of the Construction Highlights newsletter is to engage the college community and invite all along on the Largo campus' transformation journey. It will share important information including construction updates, progress photos, employee features, common construction terms, and even announce ways opportunities to get involved in the construction process. While this issue will focus on Lanham Hall and Queen Anne, future issues will incorporate the Culinary Arts Center project, which will be constructed by Coakley Williams Contractors. Construction on the Culinary Arts Center will begin shortly.

STAY TUNED!



CULINARY ARTS CENTER RENDERING



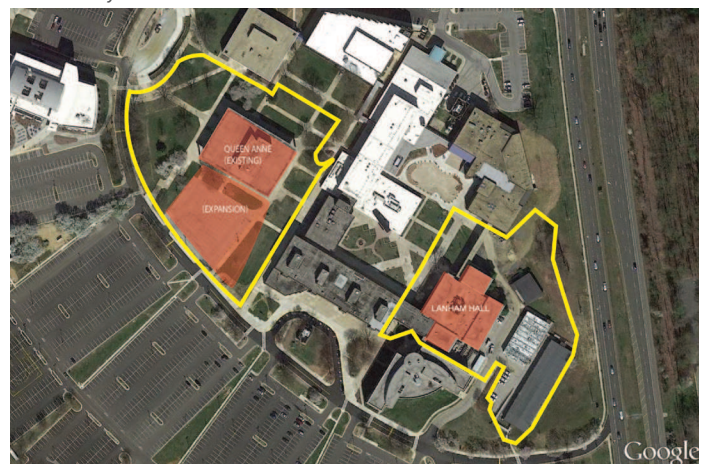
CULINARY ARTS CENTER, LANHAM HALL & QUEEN ANNE GROUNDBREAKING

PRINCE GEORGE'S COMMUNITY COLLEGE CORE CONSTRUCTION TEAM

- Dr. David C. Mosby, P.E.: *Dean of Facilities Management*
- Henry L. Dickson: *Director, Planning, Design and Construction*
- Tim King: *Construction Manager (Queen Anne)*
- Shamus Baxter: *Construction Manager (Lanham Hall)*
- Manuel Arrington: *Director, Network Services and Telecom*
- William Blank: *IT Facilities Planning Manager*
- Donte Robinson: *Manager, Audio Visual Technology Services*
- Ed Cruz: *Telecommunications Manager*

For questions & information, contact:
Henry L. Dickson | 301-546-3057 | dicksohl@pgcc.edu

A bird's eye view of the Queen Anne and Lanham construction boundaries.



Google

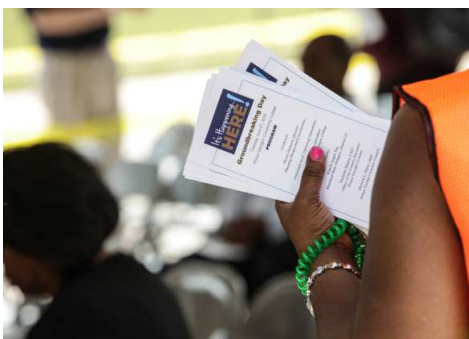
Construction Highlights

July 2016 | #pgcchere | Prince George's Community College

**Culinary Arts Center,
Lanham Hall & Queen Anne**

Breaking Ground!
June 21, 2016

It's Happening...
HERE!



► About Forrester Construction

Your Lanham Hall Construction Team

Founded in 1988, Forrester Construction Company is an award-winning Engineering News Record Top 400 and Washington Business Journal Top 25 general contractor offering clients construction management, preconstruction and design build services. A locally-owned leader in the Washington DC Metropolitan market, Forrester has a proven record of construction excellence, client satisfaction and efficient project delivery.

► About Turner Construction

Your Queen Anne Construction Team

Turner Construction Company was founded in 1902 by Henry C. Turner, a devout Quaker from the eastern shore of Maryland. In 1927, Turner completed its first project in the State of Maryland, and in the early 2000's a fully staffed office was formally established in Maryland. Today, Turner is a leader in Higher Education and Green Building, ranked #1 by Engineering News Record across those, and many other market segments. With a staff of 5,200 employees, the company completes \$10 billion of construction on 1,500 projects around the world each year. Turner offers clients the accessibility and support of a local firm with the stability and resources of a multi-national organization.

Construction Highlights

July 2016 | #pgcchere | Prince George's Community College

Lanham Hall—On its way UP!

It's Happening...
HERE!

► We Keep Building

Construction Activities Underway

In 2002, the college acquired the TO, TS and TZ modular buildings located adjacent to Lanham Hall. These buildings have provided temporary facilities for several programs over the last 14 years including the Campus Assessment Center, Financial Aid and Adult Education Offices. Their removal from campus in late June, as part of the Lanham Hall project, ushers in a new chapter in the college's history. Once construction is complete, Lanham Hall will become the permanent home of recent occupants including Adult Education, ESL, Next Step and PGCC Cares.

On June 8, 2016, Prince George's Community College awarded the Lanham Hall Renovation and Addition project to Forrester Construction. Later that month, the partners broke ground on the 92,000 square foot construction project whose central goal is to resolve building infrastructure and provide needed space.

In the next three months, visitors to the campus will see the building's exterior start to transform as construction mobilizes on site. Forrester's project team has installed fencing to safely separate and screen construction activities from the surrounding community. As work ramps up, signage will be posted detouring students and other pedestrians around the jobsite, and Forrester's office trailers, equipment and materials will begin to arrive. Shoring towers will be installed to brace and support the original building while interior and exterior demolition begins.

Abatement of hazardous materials, such as removal of asbestos, will also start to take place before any new work is installed in the existing building. Specialists trained to remove asbestos and isolate it from the surrounding community will be brought in to manage this process. They will encapsulate effected areas, remove the material, clean the space and perform thorough testing to ensure the asbestos has been removed. It will then be safely disposed of at a special waste facility. This process is an important first step towards making the building ready for renovation. Once completed, it will allow other activities such as interior demolition, plumbing, electrical and mechanical work to get underway.



EXISTING LANHAM HALL EXTERIOR



MODULAR BUILDINGS REMOVED FROM CAMPUS

Perspectives... *Your Voice on the Project*

Name: Dave Buonora

Role: Assistant to the Vice President,

Workforce Development & Continuing Education



What needs are being met by improving the Lanham Hall?

Consolidating most of WDCE staff into Lanham Hall will help create alignment among the staff and improve communication within the area.

How do you think the finished Lanham Hall building will impact the College and the community?

It will help to provide a clear destination for potential students to find out about the comprehensive offerings available through WDCE and to get support through student services that will be housed in the building.

How will the improved Lanham Hall facility impact you in your role at the College?

It will make it easier to have direct conversations with colleagues to address issues and compile information in a timely manner rather than relying so heavily on email.

What are you most looking forward to about the improved Lanham Hall facility?

The positive impact of a centrally located, gleaming new facility on continuing education students and how it will enhance their connection to the institution.

FORRESTER'S PROJECT TEAM

► PROJECT EXECUTIVE
Don Free

► PROJECT MANAGER
JR Roberts

► CONSTRUCTION EXECUTIVE
Mike Barnhart

► SUPERINTENDENT
Rick McGinnis

Lanham Construction Highlights

July 2016 | #pgcchere | Prince George's Community College

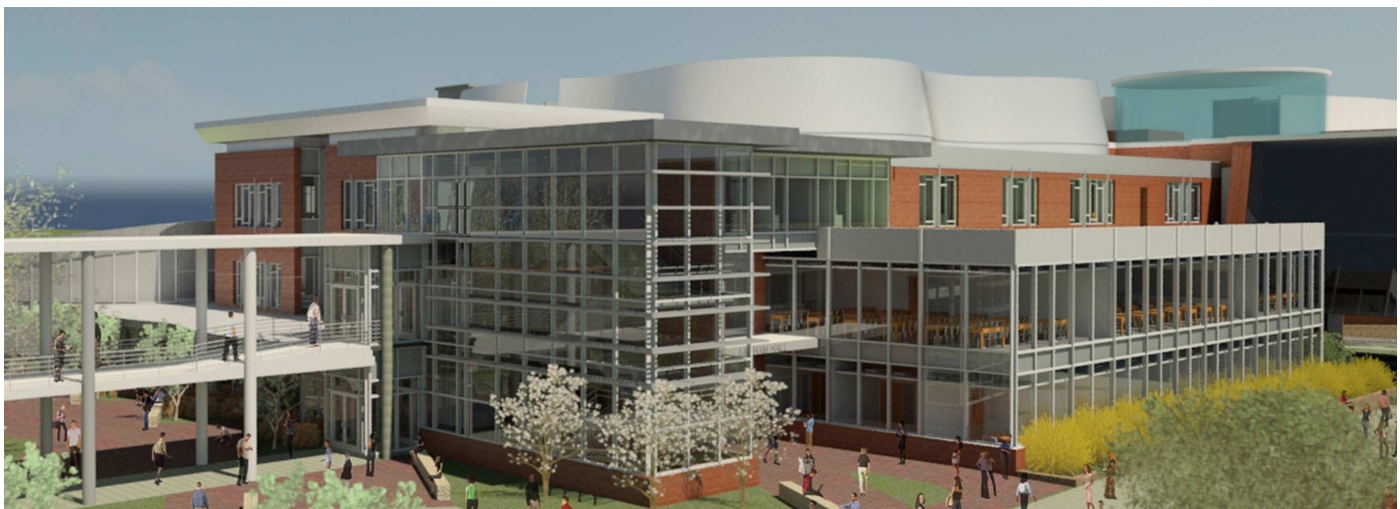
It's Happening...
HERE!

Project Overview

The renovated Lanham Hall will provide a central location for the college's Workforce Development and Continuing Education (WDCE) programs as well as academic affairs and student support programs and services in a comprehensive approach by positioning many of the support programs and services throughout the college in one central location. The Print Shop, Supply room and Mail room will be relocated from Largo Student Center and expanded. The Academy of Health Sciences at Prince George's Community College, which is the first middle college high school in the State of Maryland, will be housed in Lanham Hall as well.

The Lanham Hall Renovation and Addition project comprehensively transforms and repurposes the existing classroom building, originally constructed in the late 1960's, into a modern new facility to serve Prince George's Community College and improve the overall student and faculty experience. New floor-to-ceiling aluminum storefront, metal panel systems, large cantilevered window elements, vast glass curtain wall systems, and green roofs will be added to provide comprehensive improvements to the existing dark exterior masonry envelope and redefine the identity of Lanham Hall. Large glazing systems on all building facades will provide an inviting and visually-engaging appearance from all perspectives - including from the active campus quadrangle and adjacent public roadways. These window systems also allow for an abundance of natural light penetration deep into the interior spaces and impressive views to the surrounding campus.

The new site and landscape design surrounding Lanham Hall will improve the quality of the pedestrian experience, incorporate sustainable principles, and maintain strong visual and physical connections to adjacent buildings. Usable outdoor space will encourage fellowship among the student body and create transition spaces that frame and highlight the new building entrances. A three-story monumental glass enclosure addition will create an inviting new main entry, and once inside, a grand staircase will conveniently unite all three building floors. The seamless merging of the existing building parameters with new, contemporary materials throughout the interior and exterior of the facility will create a compelling composition of spaces. The new 175+ seat lecture hall located on the first floor with an elliptical form provides a state-of-the-art learning experience in a unique setting, and creates a distinctive and interesting exterior appearance. The building will feature miscellaneous offices, classrooms, conference rooms, tutoring and study rooms, student lounge space and multipurpose rooms.



Queen Anne — On its way UP!

It's Happening...
HERE!



About the Facility

The Queen Anne Renovation and Addition expands and transforms the existing 1960's-era Queen Anne Fine Arts Building into a new state of the art educational facility serving both the College and the greater community of Prince George's County. The project supports the enhancement of vital Liberal Arts departments and programs dedicated to performing and communication arts as well as various Workforce Development, Student Services, and Community outreach programs currently lacking on campus.

Hallam Theatre will be completely renovated for College-wide assembly functions and will continue to host a variety of community productions and events. In addition to simply renovating existing space, the Queen Anne building will be expanded with an additional 136,545 square feet of space that will surround and integrate the design of the original building and create connections allowing for the movement of students/faculty, costumes, supplies and instruments back and forth.

These new spaces will improve and transform the curriculums of Music, Theatre, Speech, and Mass Communications. Beyond needed offices and classrooms, the renovated Queen Anne building features the 759-seat (renovated) Hallam Theatre, a 304 seat Proscenium Theatre, a 152-seat Blackbox Studio, Recital Hall, Instructional Theatre and Entertainment Technology Labs, Instructional Conference spaces, Mass Communications Broadcast and Production Labs, Music rehearsal spaces, Dance studios, an Art Gallery, and a Cafe.

Perspectives... *Your Voice on the Project*

Name: Tammy O'Donnell

Role: Chair, Communication and Theatre Department



What needs are being met by improving the Queen Anne Academic Center?

Many needs are being met by this renovation and expansion. Currently there is ONE theatre on the campus that is 50 years old and in need of some TLC. The faculty and staff have tried to maintain the space so that it remains relevant in terms of equipment and use. However, one space is not enough to meet the demands of a growing theatre program. Students want to do musical theatre productions...we do not have a space to accommodate an orchestra. We do not currently have a dance program. The music department is limited in its offerings as it has been struggling with the same out of date facility in Marlboro Hall. Students (and faculty) are excited about the future of the program and the many opportunities it will bring for growth and educational experiences.

The community has been asking for more access to the space as well. Political events, dance school recitals, graduations, public meetings, music groups---all want the chance to use the space. But because of the outdated facility and academic needs, the community has had very limited use of the space. With the new building, there will be more opportunities to bring in community artists to perform and share their talents with the county and beyond!

How do you think the finished Queen Anne Academic Center will impact the College and the community?

First and foremost, our students will be able to study performing arts —Music, Dance, Theatre—in a state of the art facility with award winning faculty. There will be more opportunities for students to expand their studies from a basic AA Theatre degree, to Musical Theatre, Dance, Entertainment Technology and Performing Arts degrees. Additional performance venues will allow students more opportunities to perform and study. Our Mass Communication program will also feel the impact—television programs being filmed in the new studio, students having their own radio programs on our new radio station. Again, highlighting the academic program by impacting the community in which we serve.

Queen Anne Construction Highlights

July 2016 | #pgcchere | Prince George's Community College

It's Happening...
HERE!

Queen Anne What's Happening Now?

3-Month Look Ahead

- ▶ Interior Demolition
- ▶ Demolition of Existing Sitework
- ▶ Coordination of MEP Systems
- ▶ Installation of Wet Utilities
- ▶ Commencing Foundations



A Peek Inside the New Queen Anne...



Your Voice on the Project *Continued*

It will certainly generate more publicity for the college and hopefully increase enrollment in programs, attendance at events and support for community artists.

How will the improved Queen Anne facility impact you in your role at the College?

As the chair of the department, I will be able to work in a facility that engages creativity ALL DAY LONG! Television studios, radio stations, theatres, workshops, costume construction, speeches, acting, music....all of this will fill our halls. It will require a bit more management of classes and faculty as we grow, but I can only see the impact on the department as positive and we are ready for it!

What are you most looking forward to about the improved Queen Anne facility?

The ability to showcase the tremendous talent of our students and the interaction they will now have with local, regional and national artists. Classroom learning is important, but exposing students to artists and working with them, talking with them and creating with them in an environment that is conducive to this kind of work will change the landscape of their educational career.